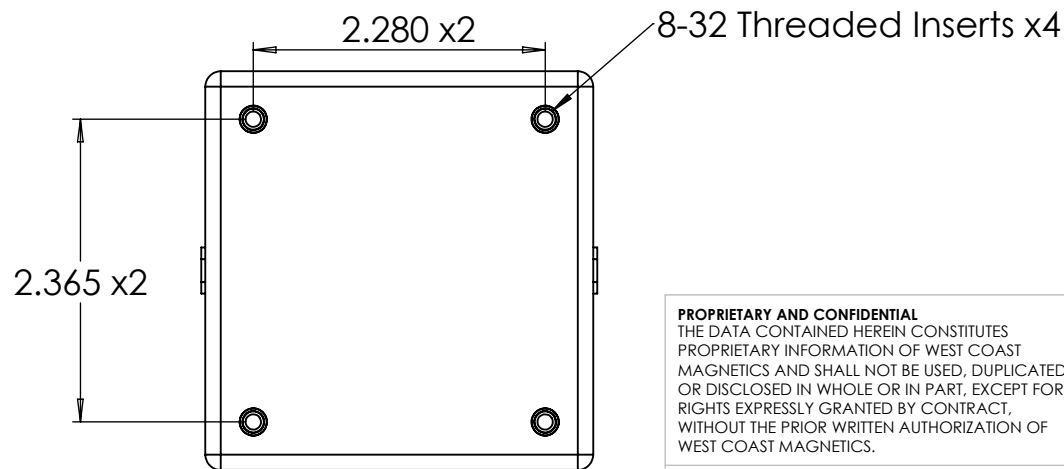
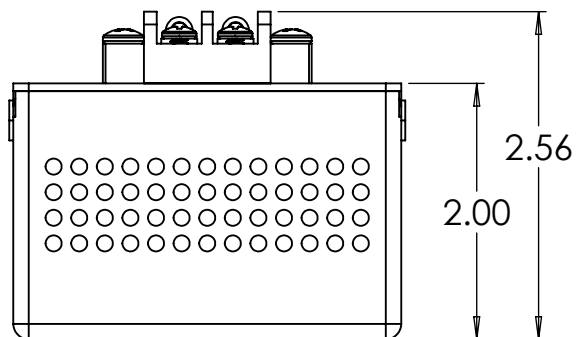
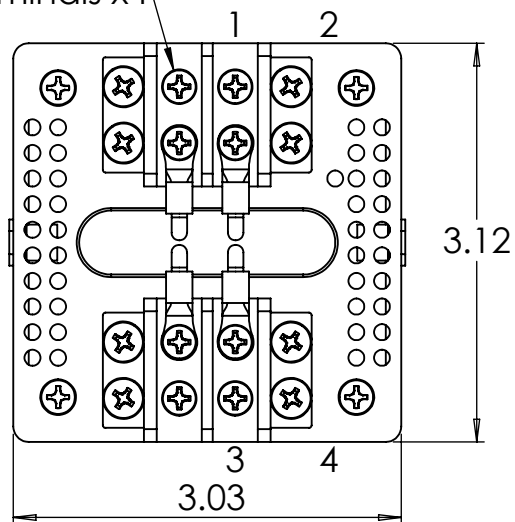


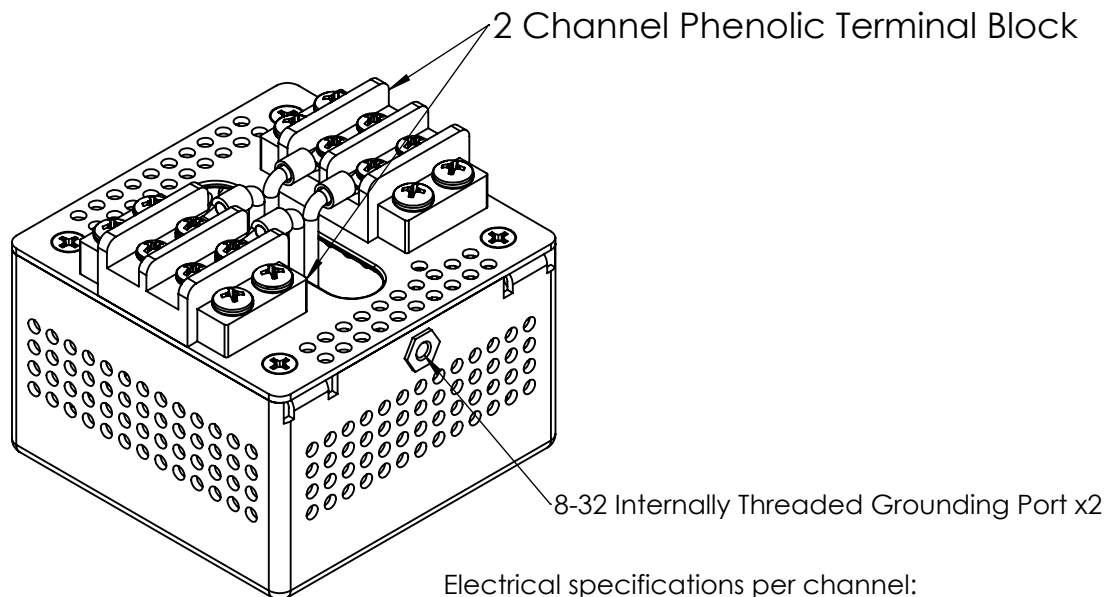
#6 Terminals x4



**PROPRIETARY AND CONFIDENTIAL**  
THE DATA CONTAINED HEREIN CONSTITUTES PROPRIETARY INFORMATION OF WEST COAST MAGNETICS AND SHALL NOT BE USED, DUPLICATED, OR DISCLOSED IN WHOLE OR IN PART, EXCEPT FOR RIGHTS EXPRESSLY GRANTED BY CONTRACT, WITHOUT THE PRIOR WRITTEN AUTHORIZATION OF WEST COAST MAGNETICS.

Pat.: <https://www.wcmagnetics.com/Patents/>

REV	Change	BY	DATE
1	Migration to terminal block terminations	JC	04/21/21



Electrical specifications per channel:

Current Rating: 20A

$L = 7.67\mu\text{H}$  nom. @100kHz

$L = 7.44\mu\text{H}$  nom. @1MHz

DCR: 13.5m $\Omega$  nominal

Impedance: >4.5k $\Omega$  @13.56MHz

SRF: 13.56MHz  $\pm 0.5\text{MHz}$

Isolation: 2.5kVAC channel to channel

Isolation: 3.5kVDC channel to channel

Isolation: 6kVDC channel to chassis

Mechanical Specifications:

All materials rated for 130°C

Enclosure Material: AL 5052; alodine finish

UNLESS OTHERWISE SPECIFIED  
DIMENSIONS ARE IN INCH TOLERANCES  
DECIMALS

X.X  $\pm 0.05$  in  
X.XX  $\pm 0.02$  in  
X.XXX  $\pm 0.005$  in

DRAWING NOT TO SCALE UNLESS NOTED



**WEST COAST MAGNETICS**

4848 FRONTIER WAY, STE. 100  
STOCKTON, CA 95215  
800-628-1123

CUSTOMER  
WCM

DESCRIPTION  
2-Channel 13.56MHz Filter

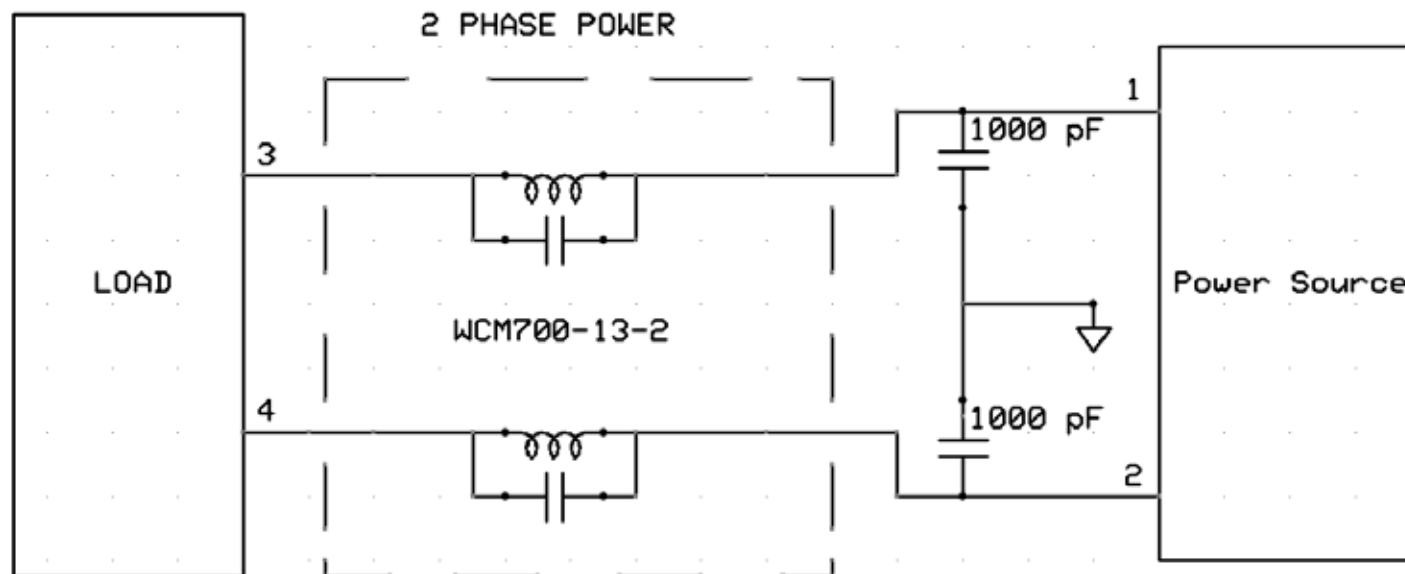
PART NUMBER  
WCM700-13-2-20A

REV  
1

RELEASED BY  
JC

DATE  
10/09/18

SHEET 1 OF 2



Schematic of one recommended application for WCM700-13-2

**PROPRIETARY AND CONFIDENTIAL**  
 THE DATA CONTAINED HEREIN CONSTITUTES  
 PROPRIETARY INFORMATION OF WEST COAST  
 MAGNETICS AND SHALL NOT BE USED, DUPLICATED,  
 OR DISCLOSED IN WHOLE OR IN PART, EXCEPT FOR  
 RIGHTS EXPRESSLY GRANTED BY CONTRACT,  
 WITHOUT THE PRIOR WRITTEN AUTHORIZATION OF  
 WEST COAST MAGNETICS.

Pat.: <https://www.wcmagnetics.com/Patents/>

UNLESS OTHERWISE SPECIFIED  
 DIMENSIONS ARE IN INCH TOLERANCES  
 DECIMALS

X.X ± 0.05 in  
 X.XX ± 0.02 in  
 X.XXX ± 0.005 in

DRAWING NOT TO SCALE UNLESS NOTED



**WEST COAST MAGNETICS**

4848 FRONTIER WAY, STE. 100  
 STOCKTON, CA 95215  
 800-628-1123

CUSTOMER  
 WCM

DESCRIPTION  
 2-Channel 13.56MHz Filter

PART NUMBER  
 WCM700-13-2

REV  
 1

RELEASED BY  
 JC

DATE  
 10/09/18

SHEET 2 OF 2