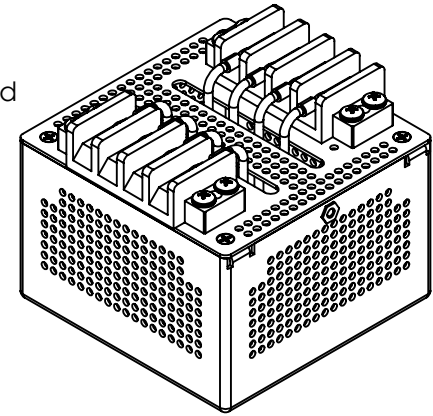
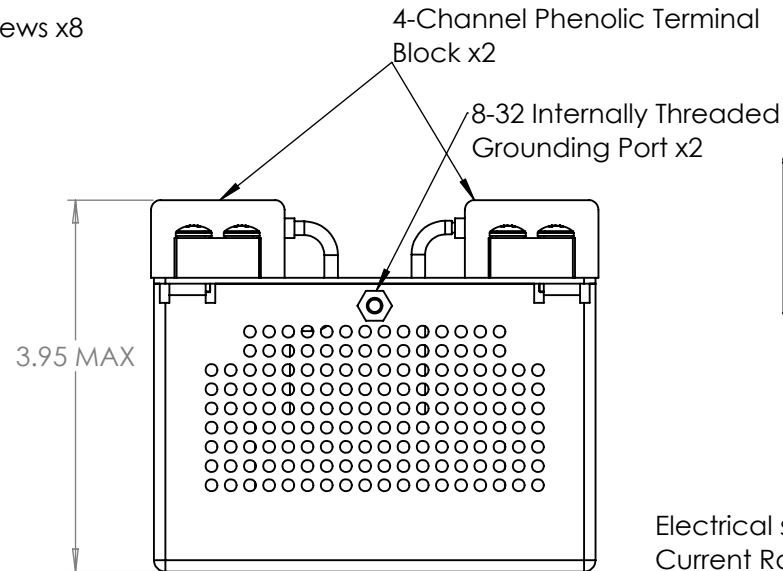
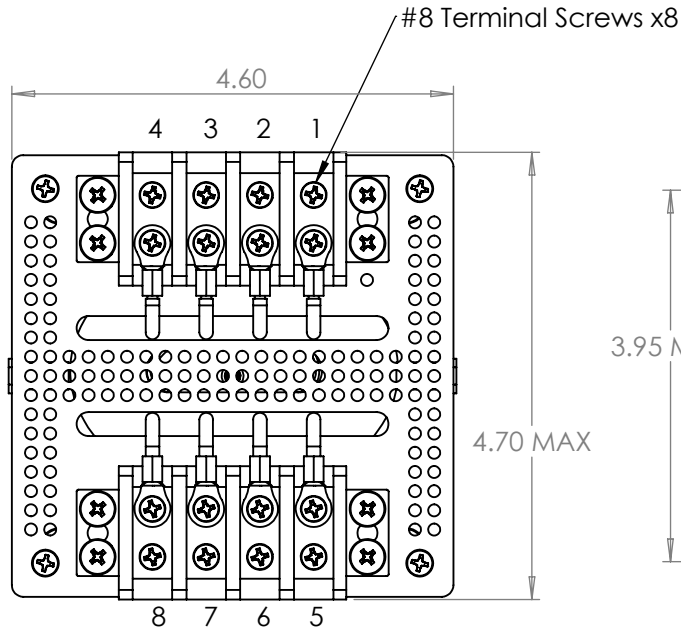


REV	Change	BY	DATE
-	Initial Release	ZT	05/10/22



Electrical specifications per channel:

Current Rating: 20A

$L = 6.12\mu\text{H}$ nom. @100kHz

$L = 5.88\mu\text{H}$ nom. @1MHz

DCR: 15.6m Ω nominal

Impedance: >4.5k Ω @13.56MHz

SRF: 13.56MHz $\pm 0.5\text{MHz}$

Isolation: 2.5kVAC channel to channel

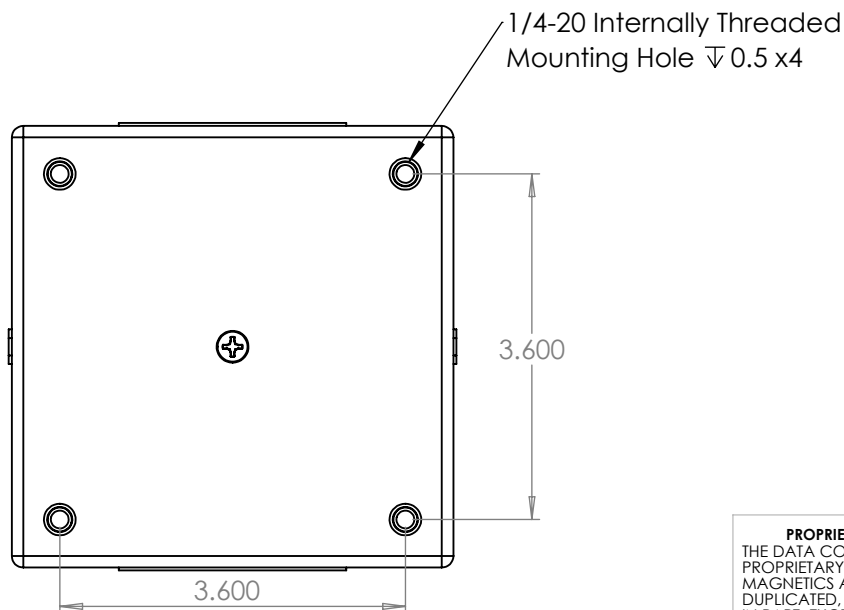
Isolation: 3.5kVDC channel to channel

Isolation: 6kVDC channel to chassis

Mechanical Specifications:

All materials rated for 130°C

Enclosure Material: AL 5052; alodine finish



UNLESS OTHERWISE SPECIFIED
DIMENSIONS ARE IN INCH TOLERANCES
DECIMALS

X. ± 0.10 in
X.X ± 0.05 in
X.XX ± 0.02 in
X.XXX ± 0.005 in

DRAWING NOT TO SCALE UNLESS NOTED

PROPRIETARY AND CONFIDENTIAL

THE DATA CONTAINED HEREIN CONSTITUTES PROPRIETARY INFORMATION OF WEST COAST MAGNETICS AND SHALL NOT BE USED, DUPLICATED, OR DISCLOSED IN WHOLE OR IN PART, EXCEPT FOR RIGHTS EXPRESSLY GRANTED BY CONTRACT, WITHOUT THE PRIOR WRITTEN AUTHORIZATION OF WEST COAST MAGNETICS.



WEST COAST MAGNETICS

4848 FRONTIER WAY, STE. 100
STOCKTON, CA 95215
800-628-1123

CUSTOMER
WCM

DESCRIPTION
4 Channel 13.56MHz Filter

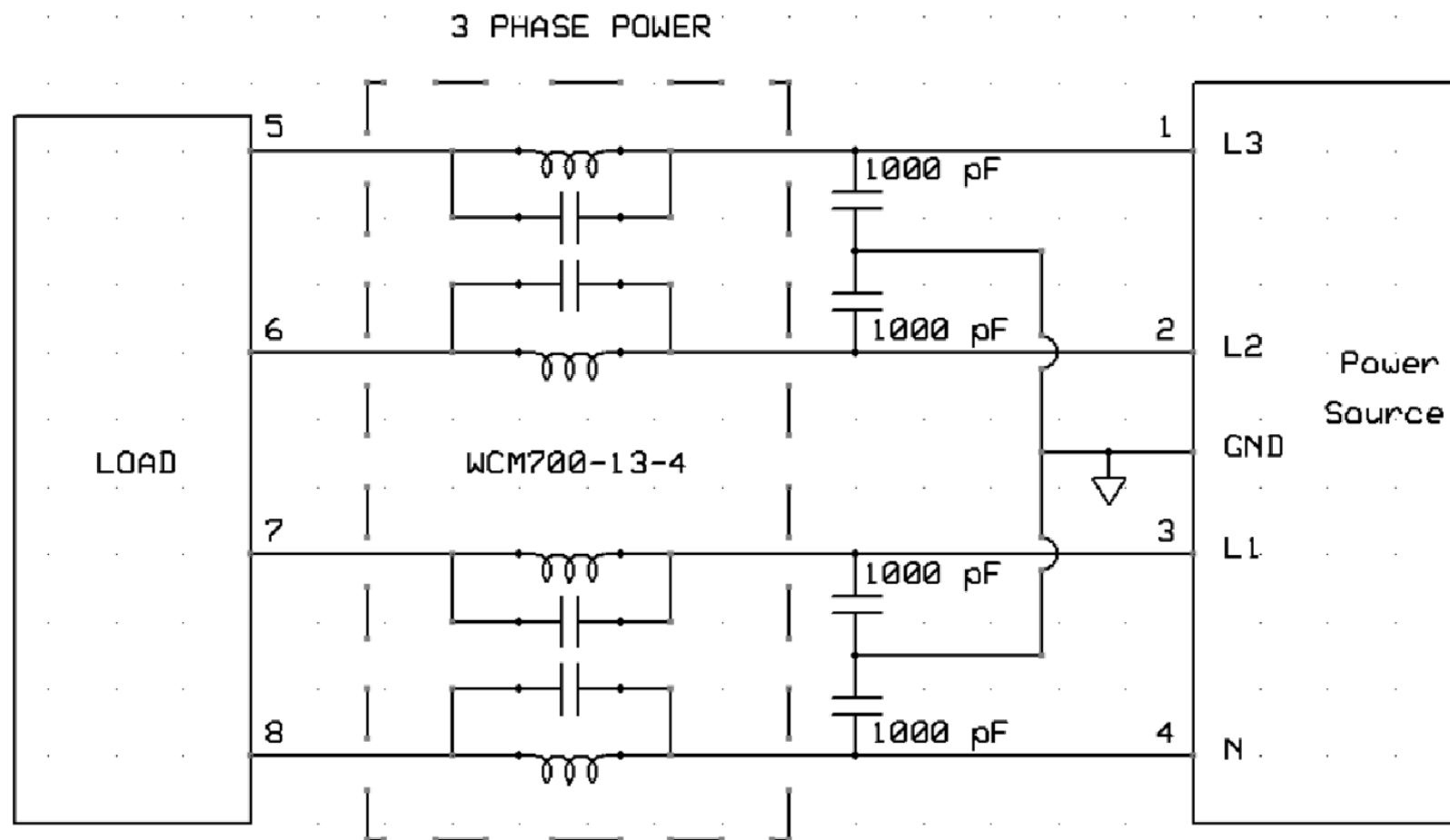
PART NUMBER
WCM700-13-4-20A

REV
-

RELEASED BY
ZT

DATE
05/10/22

SHEET 1 OF 2



Schematic of one recommended application for WCM700-13-4-20A

UNLESS OTHERWISE SPECIFIED
DIMENSIONS ARE IN INCH TOLERANCES
DECIMALS

X. ± 0.10 in
X.X ± 0.05 in
X.XX ± 0.02 in
X.XXX ± 0.005 in

DRAWING NOT TO SCALE UNLESS NOTED

PROPRIETARY AND CONFIDENTIAL

THE DATA CONTAINED HEREIN CONSTITUTES
PROPRIETARY INFORMATION OF WEST COAST
MAGNETICS AND SHALL NOT BE USED,
DUPLICATED, OR DISCLOSED IN WHOLE OR
IN PART, EXCEPT FOR RIGHTS EXPRESSLY
GRANTED BY CONTRACT, WITHOUT THE PRIOR
WRITTEN AUTHORIZATION OF WEST COAST
MAGNETICS.



WEST COAST MAGNETICS

4848 FRONTIER WAY, STE. 100
STOCKTON, CA 95215
800-628-1123

CUSTOMER
WCM

DESCRIPTION
4 Channel 13.56MHz Filter

PART NUMBER
WCM700-13-4-20A

REV
-

RELEASED BY
ZT

DATE
05/10/22

SHEET 2 OF 2