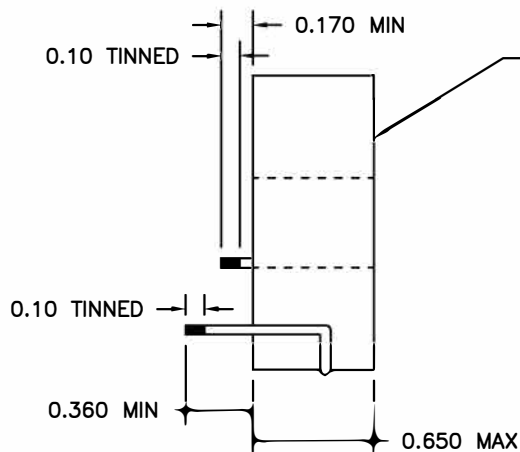
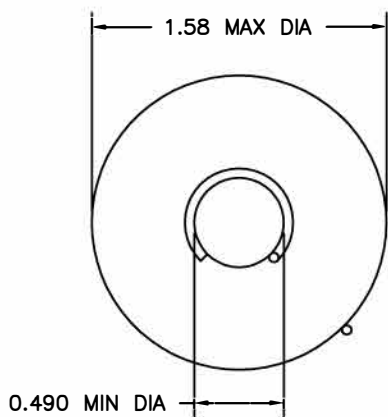


THE DATA CONTAINED HEREIN CONSTITUTES PROPRIETARY INFORMATION OF WEST COAST MAGNETICS AND SHALL NOT BE USED, DUPLICATED, OR DISCLOSED IN WHOLE OR IN PART, EXCEPT FOR RIGHTS EXPRESSLY GRANTED BY CONTRACT, WITHOUT THE PRIOR WRITTEN AUTHORIZATION OF WEST COAST MAGNETICS.

WCM REVISIONS			
REV	CHANGES	BY	DATE



0.005–0.010 THK INSULATION ON BOTTOM

ELECTRICAL SPECIFICATIONS:

Inductance = 7.180 mH nominal @ 10 kHz
DCR = 5.05 Ohms nominal

OTHER SPECIFICATIONS:

WIRE SHALL BE #24 GA. INSULATED MAGNET WIRE.
COIL SHALL BE SELF SUPPORTING

UNLESS OTHERWISE SPECIFIED DIMENSIONS ARE IN INCHES TOLERANCES PER ANSI Y14.5M

FRAC	DECIMALS	ANGLES	SURF.
±1/32	X ± 0.10"	± 1 deg.	
	.X ± 0.05		
	.XX ± 0.02"		
	.XXX ± 0.005"		

DRAWING NOT TO SCALE
UNLESS NOTED.



WEST COAST MAGNETICS

4848 FRONTIER WAY, STE. 100
STOCKTON, CA 95215
WWW.WCMAGNETICS.COM
800-628-1123

CUSTOMER	DESCRIPTION
WCM	INDUCTOR

PART NUMBER		REV.
WCMOTR001		—
RELEASED BY	DATE	PAGE
CC	01/12/2015	1/1