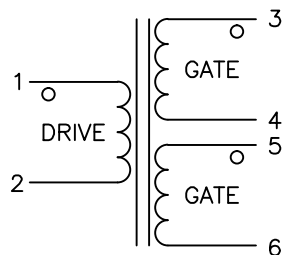


THE DATA CONTAINED HEREIN CONSTITUTES PROPRIETARY INFORMATION OF WEST COAST MAGNETICS AND SHALL NOT BE USED, DUPLICATED, OR DISCLOSED IN WHOLE OR IN PART, EXCEPT FOR RIGHTS EXPRESSLY GRANTED BY CONTRACT, WITHOUT THE PRIOR WRITTEN AUTHORIZATION OF WEST COAST MAGNETICS.

WCM REVISIONS			
REV	CHANGES	BY	DATE

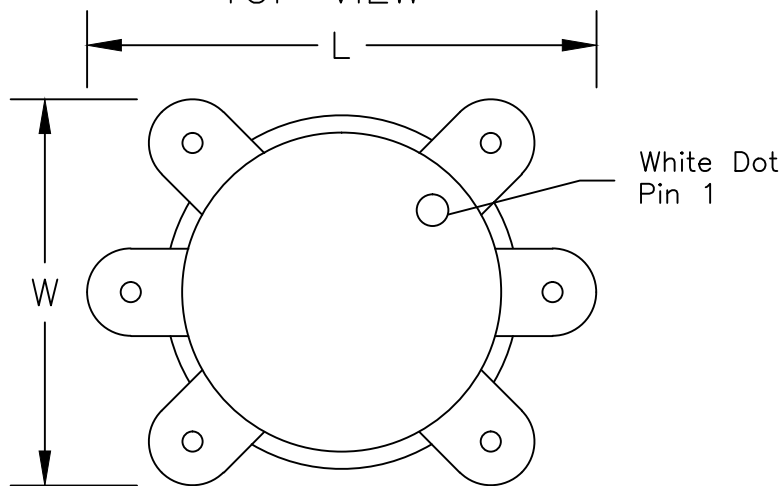
SCHEMATIC



ELECTRICAL SPECIFICATIONS:

L(1-2) = 590 uH min @ 100 kHz unloaded
 Hipot: 3000Vac DRIVE winding to GATE winding
 DCR(1-2) = 310 mOhm +/- 25%
 DCR(3-4) = DCR(5-6) = 150 mOhm +/- 25%
 Leakage(1-2) = 530 nH max @ 100 kHz with GATE shorted.
 Turns Ratio: 1.5:1:1

TOP VIEW



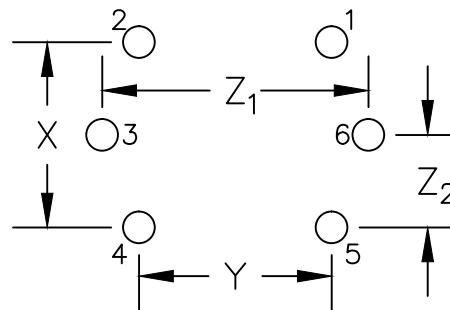
MATERIAL SPECIFICATIONS:

All material = minimum Class B, 130 degree C rated.

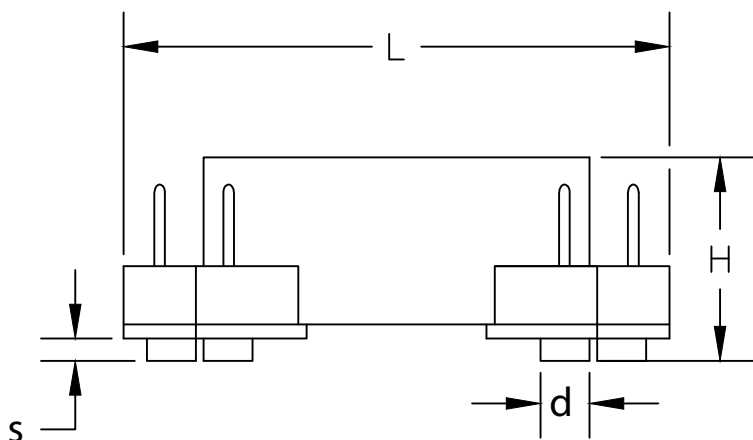
IDENTIFICATION:

Labeled with WCM Part Number, Rev, and Date Code

PCB LAYOUT



SIDE VIEW



	L	W	H	s	d	x	y	Z ₁	Z ₂
inch	0.830	0.650	0.325	0.030	0.070	0.495	0.495	0.700	0.248
mm	21.1	16.5	8.3	0.8	1.8	12.6	12.6	17.8	6.3

UNLESS OTHERWISE SPECIFIED DIMENSIONS ARE IN INCHES TOLERANCES PER ANSI Y14.5M

FRAC DECIMALS ANGLES SURF.
 ±1/32 .x ± 0.10° ± 1 deg.
 .X ± 0.05
 .XX ± 0.02°
 .XXX ± 0.005°

DRAWING NOT TO SCALE
 UNLESS NOTED.



WEST COAST MAGNETICS

4848 FRONTIER WAY, STE. 100
 STOCKTON, CA 95215
 WWW.WCMAGNETICS.COM
 800-628-1123

CUSTOMER	DESCRIPTION
WCM	Base Drive Transformer

PART NUMBER	REV.
WCMGDT001	-

RELEASED BY	DATE	PAGE
WL	1/15/15	1/1