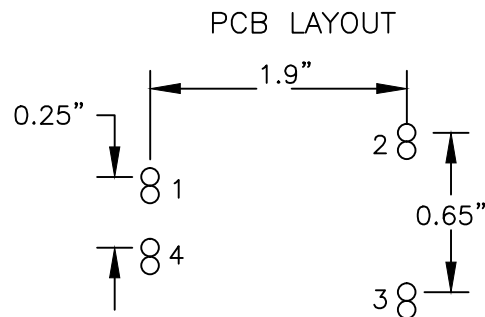
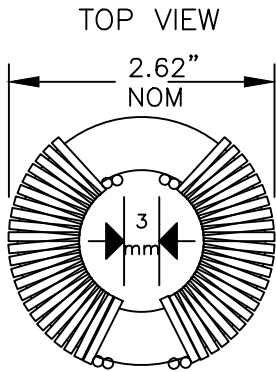
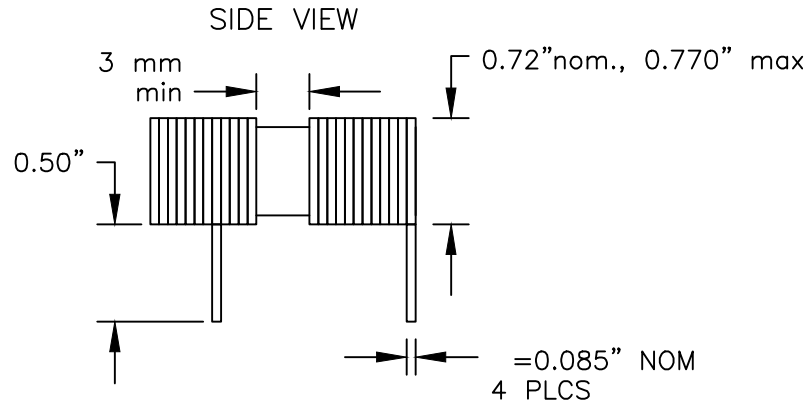


THE DATA CONTAINED HEREIN CONSTITUTES PROPRIETARY INFORMATION OF WEST COAST MAGNETICS AND SHALL NOT BE USED, DUPLICATED, OR DISCLOSED IN WHOLE OR IN PART, EXCEPT FOR RIGHTS EXPRESSLY GRANTED BY CONTRACT, WITHOUT THE PRIOR WRITTEN AUTHORIZATION OF WEST COAST MAGNETICS.

BY	DATE	BY	WCM REVISIONS
1	5-22-12	WL	reduce max height.



#### ELECTRICAL SPECIFICATIONS

Inductance = 800 uH min at 10 kHz  
Hipot: 2500 Vac primary to secondary.  
50 Arms max current rating.

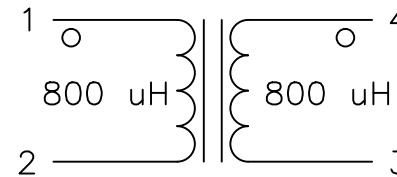
#### MATERIAL SPECIFICATIONS

All materials minimum 155 C rated.  
ROHS compliant  
UL1446 compatible.  
3 mm creepage and clearance between windings

#### OTHER

-40C to +85C ambient temperature range.

#### SCHEMATIC



UNLESS OTHERWISE SPECIFIED DIMENSIONS ARE IN INCHES TOLERANCES PER ANSI Y14.5M		WEST COAST MAGNETICS	
FRAC	DECIMALS	ANGLES	SURF.
±	.X ± 0.10"	±	
	.X ± 0.05		
	.XX ± 0.02"		
	.XXX ± 0.005"		
DRAWING NOT TO SCALE UNLESS NOTED.		4848 FRONTIER WAY, STE. 100 STOCKTON, CA 95215 WWW.WCMAGNETICS.COM 800-628-1123	
CUSTOMER		DESCRIPTION	
WCM		COMMON MODE CHOKE	
PART NUMBER			REV.
WCMCMC0056			1
RELEASED BY	DATE	PAGE	
CC	11/06/13	1/1	

**WCM** WEST COAST MAGNETICS