



west coast
magnetics

WCM319 series power inductors

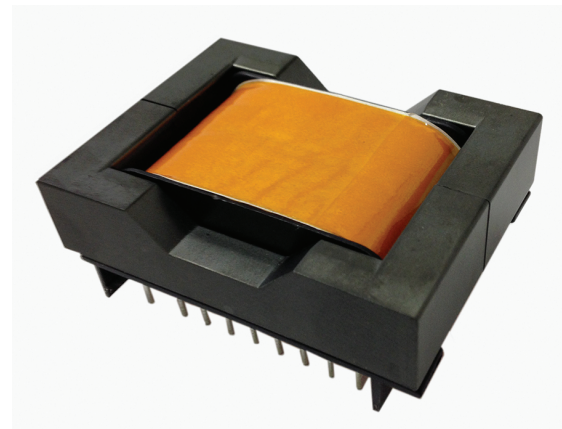
PRODUCT DESCRIPTION

WCM's 319 series inductors are designed for use in buck boost (differential) circuits. Using an improved generation of Shaped Foil Technology, this inductor series has lower core and winding losses than competing products, especially at frequencies over 10 kHz and ripple current magnitudes of 5% and higher. The WCM319 series is an industry leading low cost, high performance inductor.

SHAPED FOIL TECHNOLOGY™

West Coast Magnetics' exclusive SHAPED FOIL TECHNOLOGY™ combines the low DCR of a foil winding, with the low AC winding resistance of litz wire. For many high ripple, high frequency applications it has significantly lower winding losses than any litz or solid wire winding. Check with WCM's engineering department to see if it is right for your application.

Product Code	Inductance (μ H) \pm 10%	DCR (m Ω)	idc amps INPUT	Schematic
WCM319-01	380.8	44.90	7.00	A
WCM319-02	169.0	16.95	12.00	A
WCM319-03	141.6	13.70	13.00	A
WCM319-04	116.4	10.58	15.00	A
WCM319-05	83.5	7.20	18.00	A
WCM319-06	49.7	4.40	22.00	A
WCM319-07	41.5	3.83	24.00	A
WCM319-08	36.1	3.25	26.00	A
WCM319-09	29.3	2.83	28.00	A
WCM319-10	23.6	2.30	32.00	B
WCM319-11	18.6	1.90	37.00	B
WCM319-12	14.4	1.53	41.00	B
WCM319-13	10.4	1.28	45.00	B
WCM319-14	7.3	1.13	55.00	B

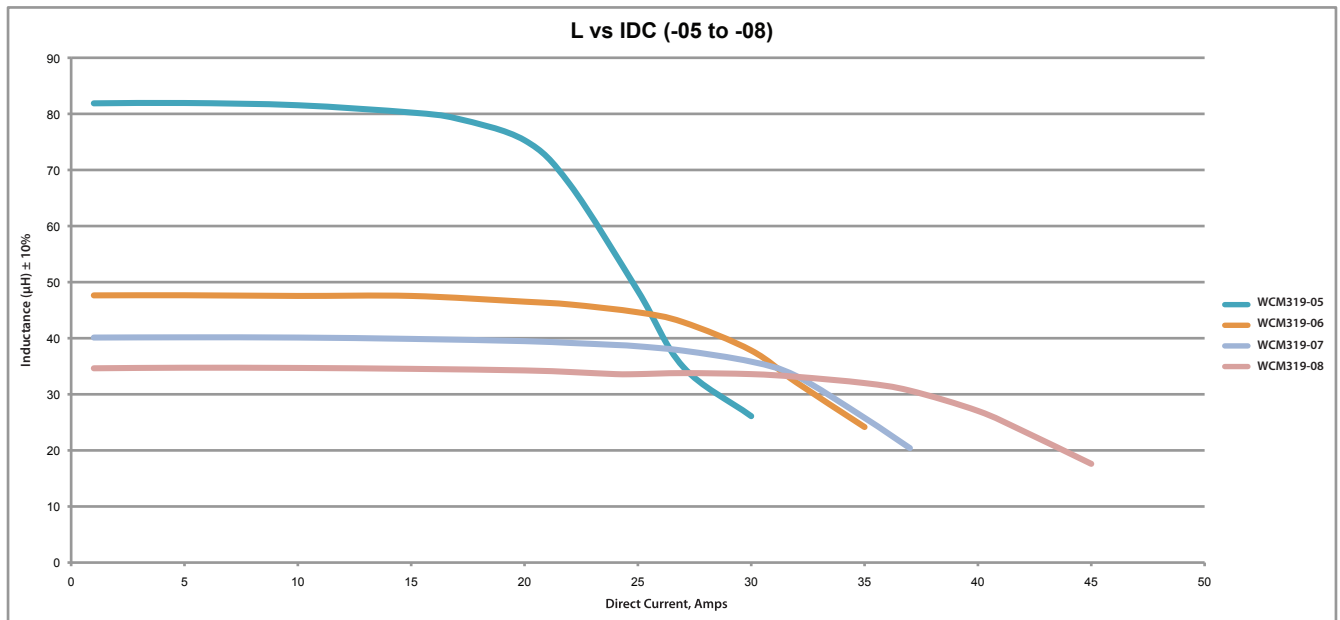
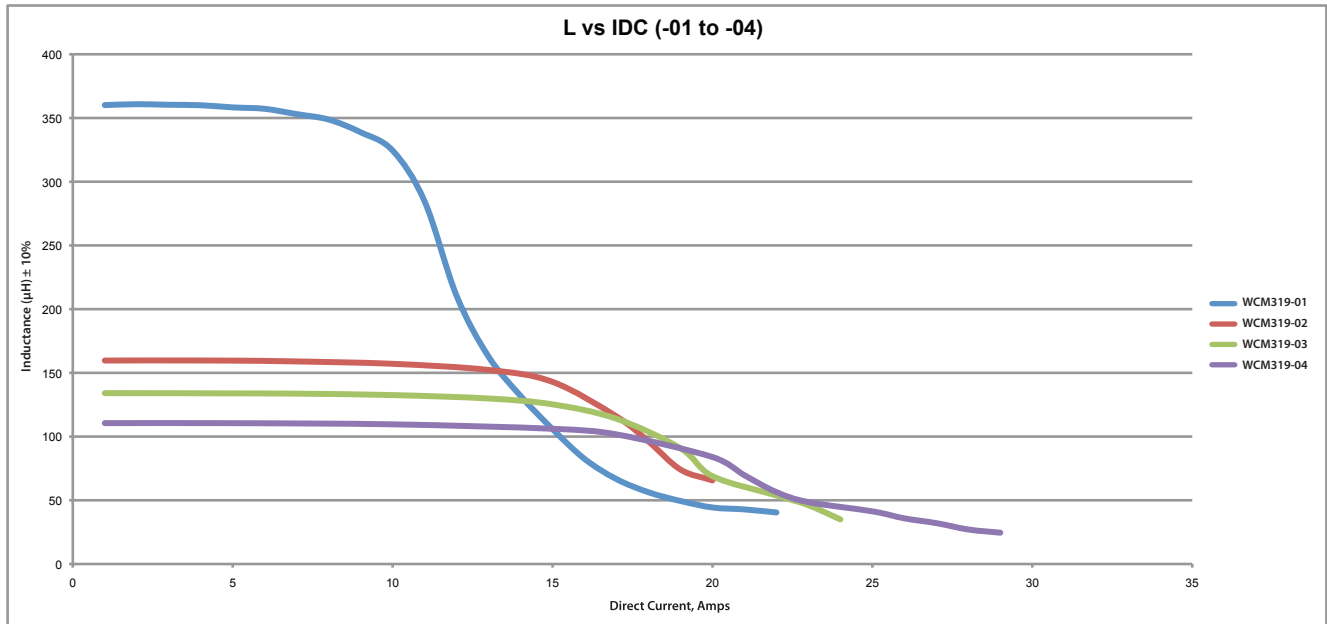


www.wcmagnetics.com 1.800.628.1123



west coast
magnetics

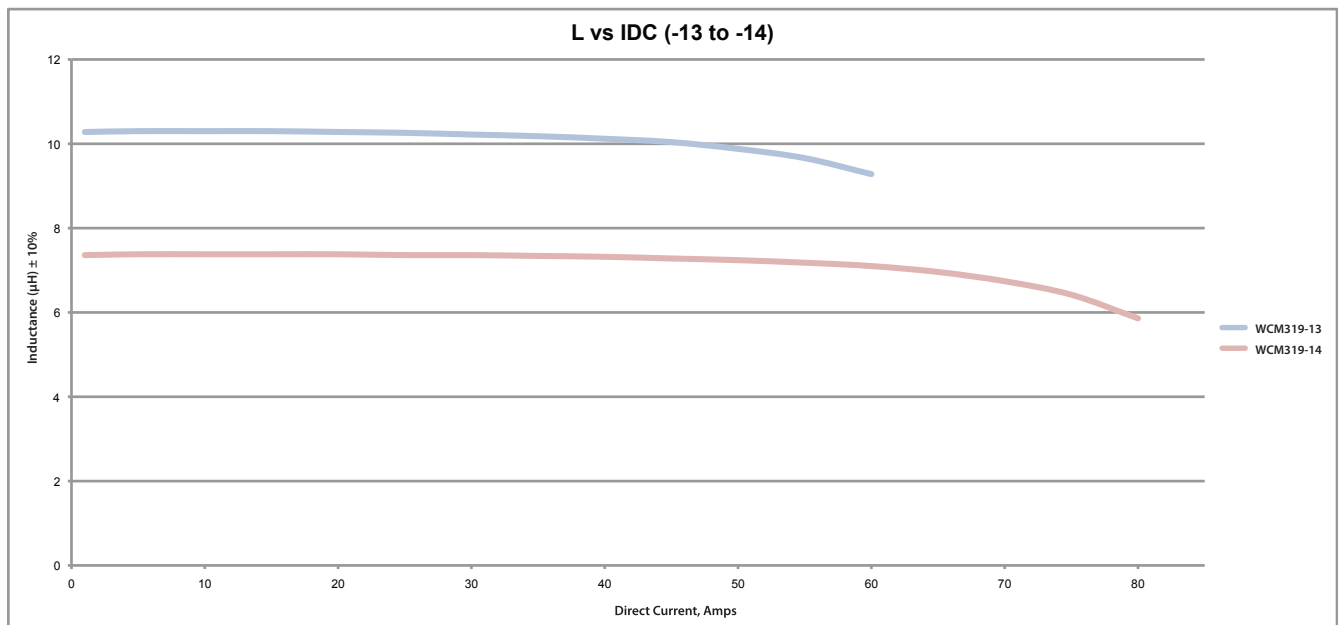
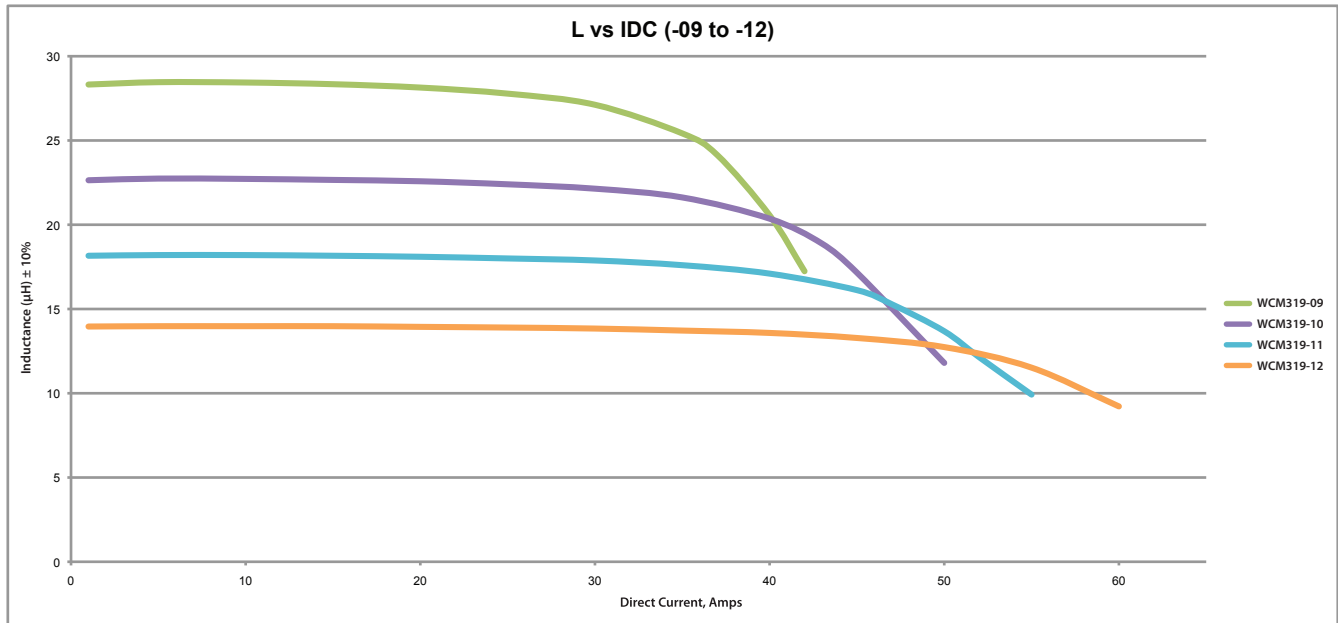
WCM319 series *p.2* power inductors





west coast
magnetics

WCM319 series *p.3* power inductors





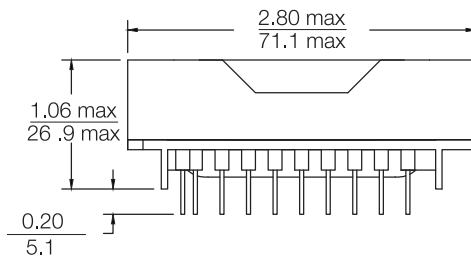
west coast
magnetics

WCM319 series *p.4*

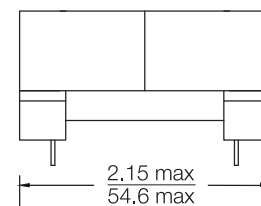
power inductors

Dimensions: $\frac{\text{inches}}{\text{mm}}$

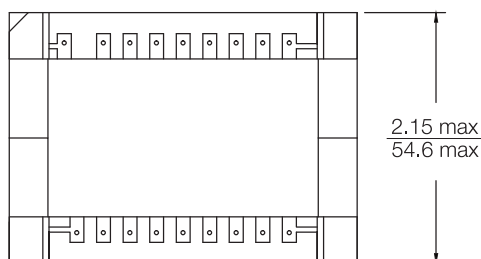
WCM319
Front View



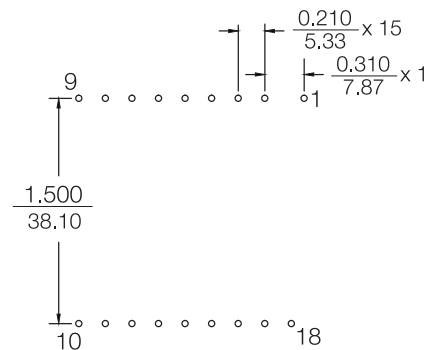
WCM319
Side View



WCM319
Bottom View



WCM319
Pin Layout



Tolerance:

Inches

x.xx ± 0.020 "

x.xxx ± 0.005 "

Millimeters

x.x $\pm 0.25 \text{ mm}$

x.xx $\pm 0.13 \text{ mm}$

Pin diameter=0.04"

WCM319
Schematic

