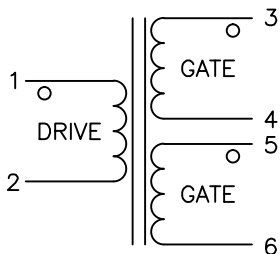


THE DATA CONTAINED HEREIN CONSTITUTES PROPRIETARY INFORMATION OF WEST COAST MAGNETICS AND SHALL NOT BE USED, DUPLICATED, OR DISCLOSED IN WHOLE OR IN PART, EXCEPT FOR RIGHTS EXPRESSLY GRANTED BY CONTRACT, WITHOUT THE PRIOR WRITTEN AUTHORIZATION OF WEST COAST MAGNETICS.

WCM REVISIONS			
REV	CHANGES	BY	DATE

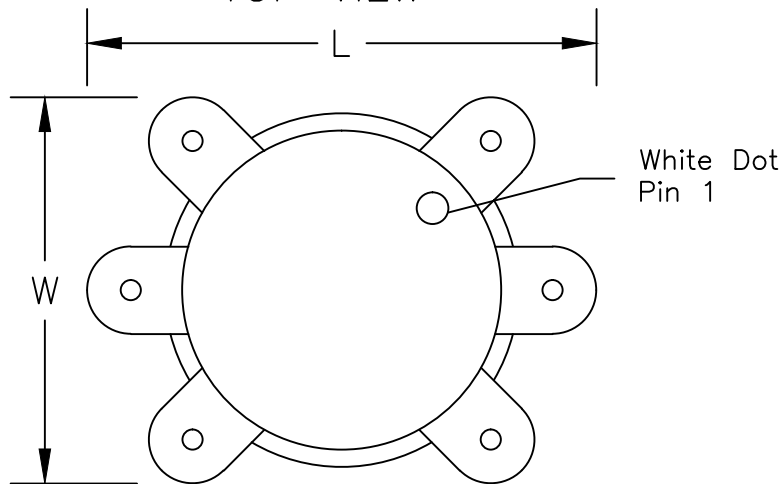
SCHEMATIC



ELECTRICAL SPECIFICATIONS:

$L(1-2) = 590 \text{ uH min @ } 100 \text{ kHz unloaded}$
 Hipot: 3000Vac DRIVE winding to GATE winding
 $DCR(1-2) = 310 \text{ mOhm } +/- 25\%$
 $DCR(3-4) = DCR(5-6) = 150 \text{ mOhm } +/- 25\%$
 $Leakage(1-2) = 530 \text{ nH max @ } 100 \text{ kHz with GATE shorted.}$
 Turns Ratio: 1.5:1:1

TOP VIEW



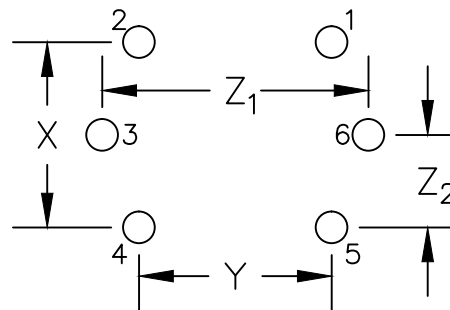
MATERIAL SPECIFICATIONS:

All material = minimum Class B, 130 degree C rated.

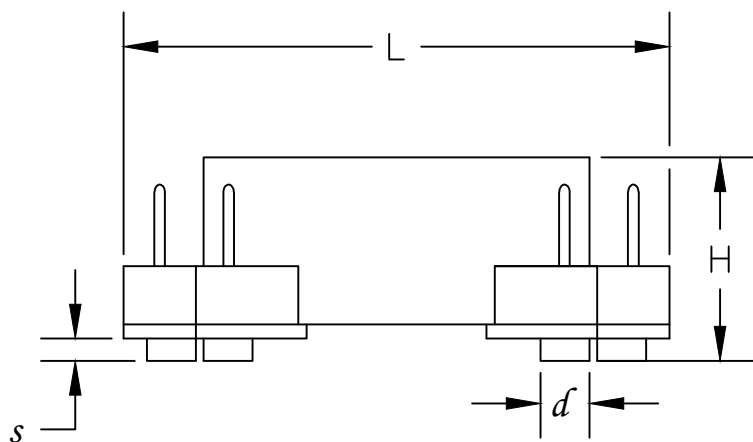
IDENTIFICATION:

Labeled with WCM Part Number, Rev, and Date Code

PCB LAYOUT



SIDE VIEW



	L	W	H	s	d	x	y	Z ₁	Z ₂
inch	0.830	0.650	0.325	0.030	0.070	0.495	0.495	0.700	0.248
mm	21.1	16.5	8.3	0.8	1.8	12.6	12.6	17.8	6.3

UNLESS OTHERWISE SPECIFIED DIMENSIONS ARE IN INCHES TOLERANCES PER ANSI Y14.5M

FRAC	DECIMALS	ANGLES	SURF.
±1/32	.x	± 0.10°	± 1 deg.
	.X	± 0.05	
	.XX	± 0.02°	
	.XXX	± 0.005°	

DRAWING NOT TO SCALE
UNLESS NOTED.



WEST COAST MAGNETICS

4848 FRONTIER WAY, STE. 100
STOCKTON, CA 95215
WWW.WCMAGNETICS.COM
800-628-1123

CUSTOMER	DESCRIPTION	
WCM	Base Drive Transformer	
PART NUMBER		
WCMGDT001	REV. -	
RELEASED BY	DATE	PAGE
WL	1/15/15	1/1