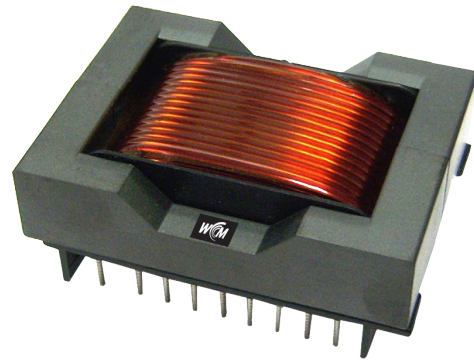


WCM410-88 WCM410-60 WCM410-70 WCM410-50

Switch Mode Transformers

Product Description

West Coast Magnetics' new WCM410-88,-70,-60,-50 series raise the bar for high power switch mode transformers. This new series was designed in order to achieve 50% more power density than other geometries currently available on the market, without sacrificing isolation. The core and bobbin are also suitable for safe UL/CSA/VDE coupling with medical grade isolation standards.



Output Power vs Frequency of Operation

Size Code	Frequency	25kHz	50kHz	100kHz	200kHz	500kHz	1MHZ
WCM410-88	Power Rating	1.8kW	2.7kW	3.7kW	4.4kW	5.1kW	-
WCM410-70	Power Rating	1.1kW	1.8kW	2.4kW	2.8kW	3.2kW	-
WCM410-60	Power Rating	-	-	1.0kW	1.2kW	1.9kW	2.2kW
WCM410-50	Power Rating	-	-	550W	660W	1.0kW	1.2kW

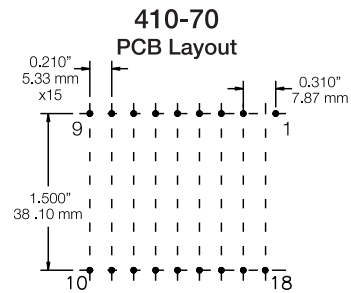
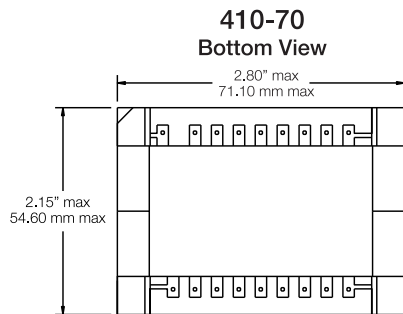
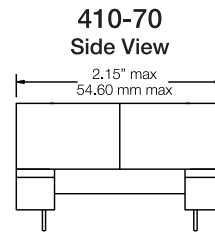
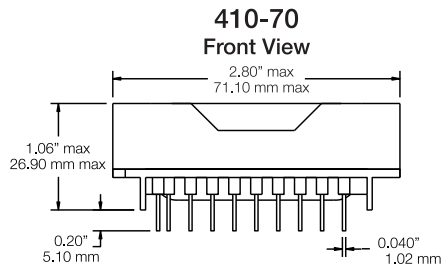
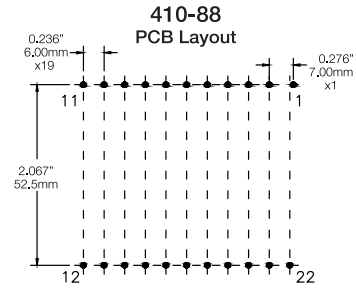
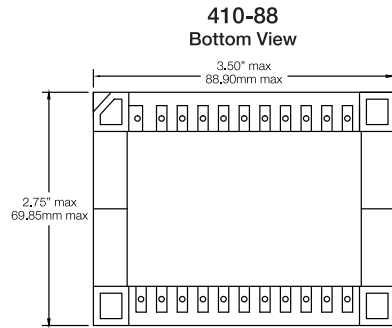
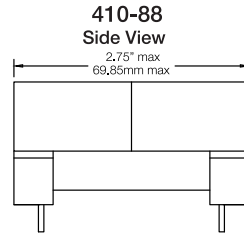
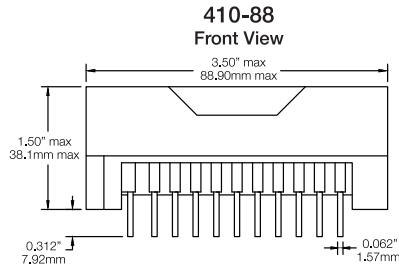
Engineering Data

Size Code	Al (ungapped, nH/T ²)	Ae Core Area (mm ²)	Le magnetic path length (mm)	Ve core volume (mm ³)	Wa bobbin winding area (mm ²)	WaAc Core area winding area (mm ⁴)	Bobbin window width (mm)	Bobbin window height (mm)	mean length per turn (mm)	Core material
WCM410-88	5500	404.0	169.4	69,292	385.2	155,765	45.00	8.56	140.9	WCM-F100
WCM410-70	4400	245.0	129.0	31,600	201.6	49,392	31.75	6.35	108.0	WCM-F100
WCM410-60	3600	158.6	102.6	15,755	137.0	21,728	26.50	5.17	86.1	WCM-F300
WCM410-50	2100	106.7	89.2	9913	112.1	11,958	24.00	4.67	68.0	WCM-F300



Schematics

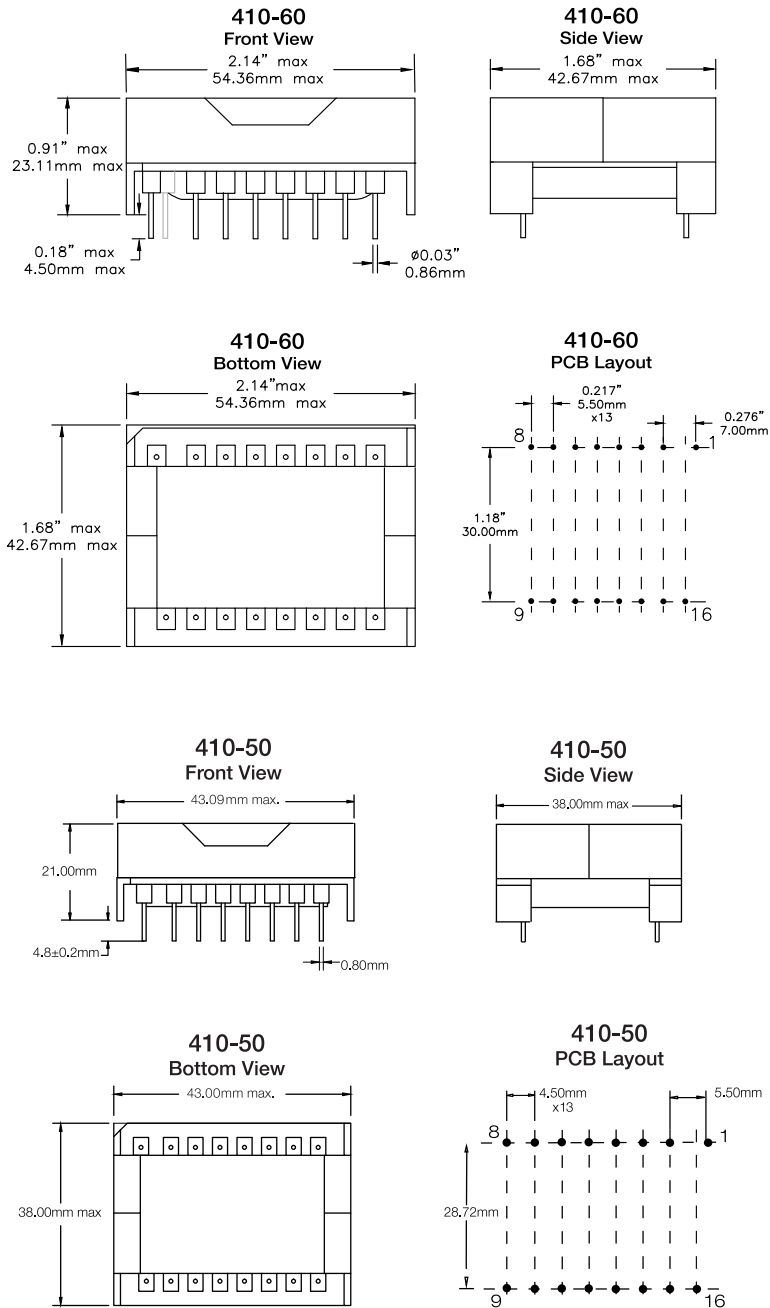
WCM410-88 and WCM410-70



Dimensions:	Tolerance:
Inches	Inches
mm	x.xx ± 0.020"
	x.xxx ± 0.005"
	Millimeters
	x.x ± 0.25 mm
	x.xx ± 0.13 mm

Schematics

WCM410-60 and WCM410-50



Dimensions:	Tolerance:
Inches	Inches
mm	x.xx ± 0.020"
	x.xxx ± 0.005"
	Millimeters
	x.x ± 0.25 mm
	x.xx ± 0.13 mm