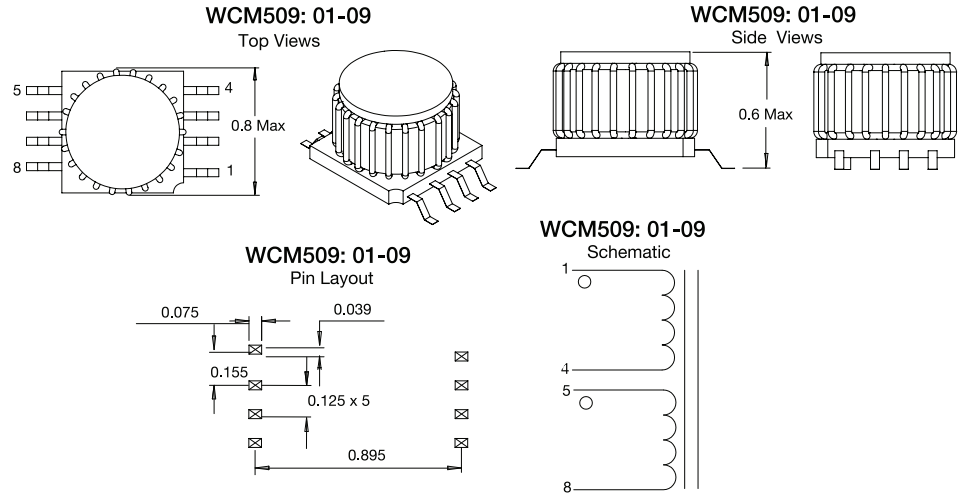


# WCM509 Series

## Common Mode Chokes

### WCM-509 Small Size: #01-09

These SMD chokes are the smallest in the WCM509 series. They provide current handling capabilities up to 8.7A while providing at least 9.9mH of inductance. Chokes are compatible for pick-and-place installation.



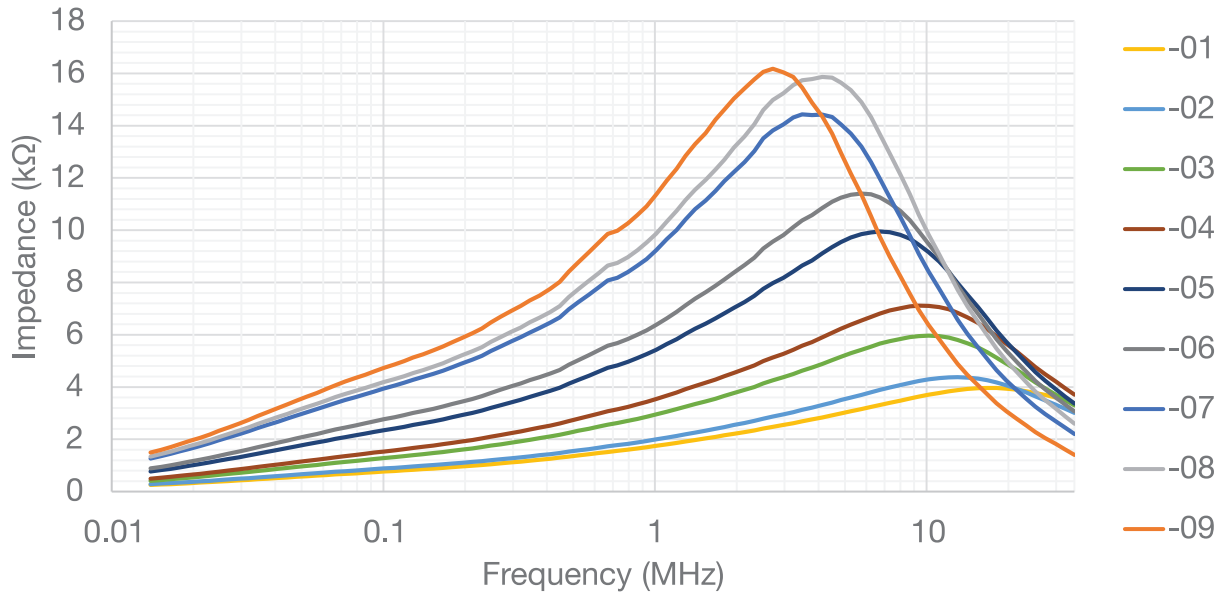
### Engineering Data

Product Code	L@10kHz min (mH)	L@100kHz min (mH)	Leakage L Max (μH)	DCR per Winding nom (mΩ)	Rated RMS Current (amps) 40°C Temp Rise	Rated RMS Current (amps) 60°C Temp Rise	Rated RMS Current (amps) 80°C Temp Rise	Hipot (Vac)
WCM509-01	1.43	0.36	14	16	6.4	7.6	8.7	1500
WCM509-02	1.70	0.43	17	22	5.0	6.1	6.8	1500
WCM509-03	2.31	0.59	23	31	4.1	5.0	5.6	1500
WCM509-04	3.02	0.77	30	44	3.4	4.0	4.4	1500
WCM509-05	4.26	1.08	43	64	2.9	3.5	3.8	1500
WCM509-06	5.20	1.32	52	95	2.5	3.1	3.5	1500
WCM509-07	7.38	1.88	74	129	2.1	2.5	2.8	1500
WCM509-08	7.98	2.03	80	165	1.7	2.1	2.5	1500
WCM509-09	9.92	2.52	100	241	1.3	1.7	2.0	1500



## Graphs WCM509 Small Size: #01-09

### WCM509: Impedance Sweeps Graph Small Chokes



#### Dimensions:

Inches  
mm

#### Note:

Please specify vertical or horizontal mount with your order.

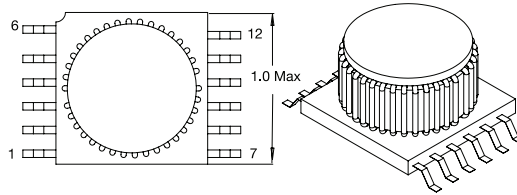
# WCM509 Series

## Common Mode Chokes

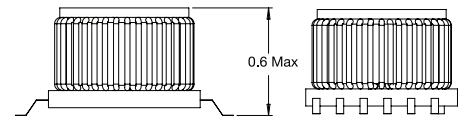
### WCM-509 Medium Size: #10-18

These SMD chokes provide an intermediate size option for common mode noise attenuation. They handle current up to 7.8A while providing at least 65mH of inductance. If your application has to balance high attenuation with form factor, these medium sized chokes are an excellent choice. Chokes are compatible for pick-and-place installation.

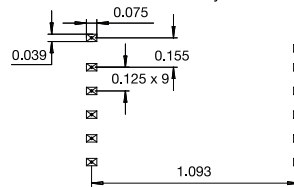
WCM509: 10-18  
Top Views



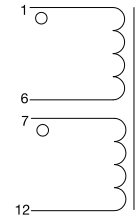
WCM509: 10-18  
Side Views



WCM509: 10-18  
Pin Layout



WCM509: 10-18  
Schematic



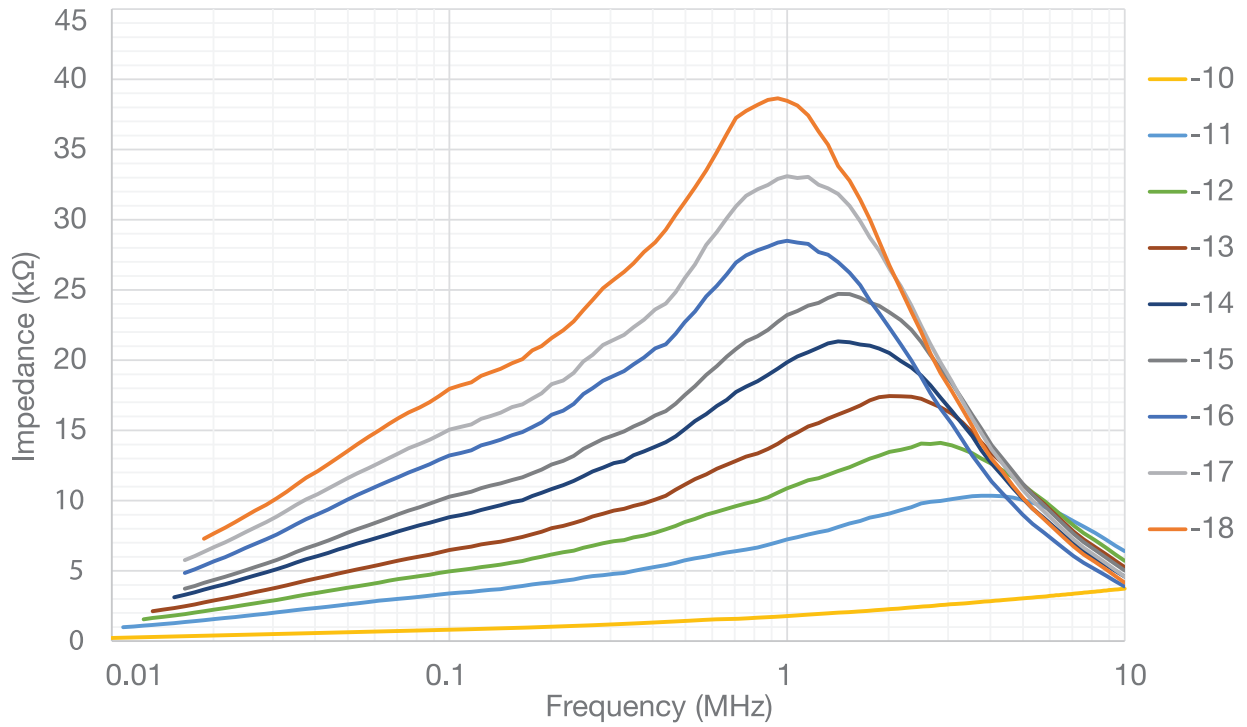
### Engineering Data

Product Code	L@10kHz min (mH)	L@100kHz min (mH)	Leakage L Max (μH)	DCR per Winding nom (mΩ)	Rated RMS Current (amps) 40°C Temp Rise	Rated RMS Current (amps) 60°C Temp Rise	Rated RMS Current (amps) 80°C Temp Rise	Hipot (Vac)
WCM509-10	1.43	0.36	14	16	6.4	7.6	8.7	1500
WCM509-12	1.70	0.43	17	22	5.0	6.1	6.8	1500
WCM509-13	2.31	0.59	23	31	4.1	5.0	5.6	1500
WCM509-14	3.02	0.77	30	44	3.4	4.0	4.4	1500
WCM509-15	4.26	1.08	43	64	2.9	3.5	3.8	1500
WCM509-16	5.20	1.32	52	95	2.5	3.1	3.5	1500
WCM509-17	7.38	1.88	74	129	2.1	2.5	2.8	1500
WCM509-18	7.98	2.03	80	165	1.7	2.1	2.5	1500



## Graphs WCM509 Medium Size: #10-18

WCM509: Impedance Sweeps Graph  
Medium Chokes



**Dimensions:**

Inches  
mm

**Note:**

Please specify vertical or horizontal mount with your order.

# WCM509 Series

## Common Mode Chokes

### WCM-509 Large Size: #19-27

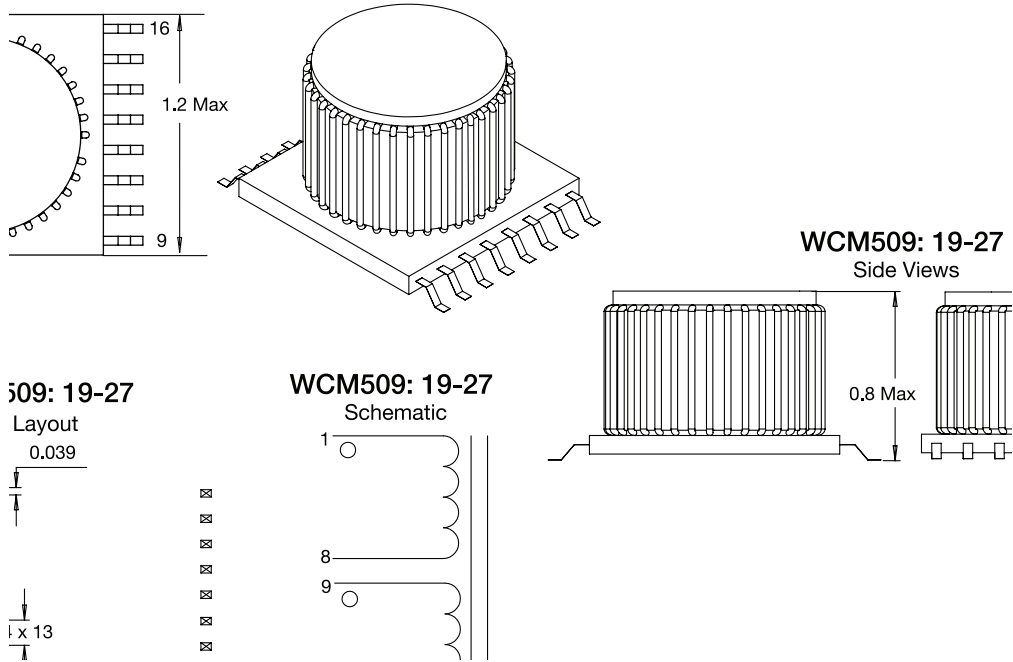
These SMD chokes are the largest in the WCM509 series. They provide current handling capabilities up to 7.9A while providing at least 116mH of inductance. Chokes are compatible for pick-and-place installation.

### Engineering Data

Product Code	L@10kHz min (mH)	L@100kHz min (mH)	Leakage L Max (μH)	DCR per Winding nom (mΩ)	Rated RMS Current (amps) 40°C Temp Rise	Rated RMS Current (amps) 60°C Temp Rise	Rated RMS Current (amps) 80°C Temp Rise	Hipot (Vac)
WCM509-19	17.82	3.24	178	38	5.8	6.9	7.9	1500
WCM509-20	24.26	4.41	242	57	4.4	5.2	5.9	1500
WCM509-21	31.68	5.76	317	83	3.6	4.4	5.0	1500
WCM509-22	43.12	7.84	431	118	3.2	3.9	4.4	1500
WCM509-23	52.86	9.61	530	162	2.7	3.1	3.5	1500
WCM509-24	67.38	12.25	674	187	2.1	2.5	2.8	1500
WCM509-25	75.30	13.69	753	253	1.8	2.1	2.4	1500
WCM509-26	92.46	16.81	924	392	1.6	1.9	2.2	1500
WCM509-27	116.38	21.16s	1164	625	1.4	1.6	1.8	1500

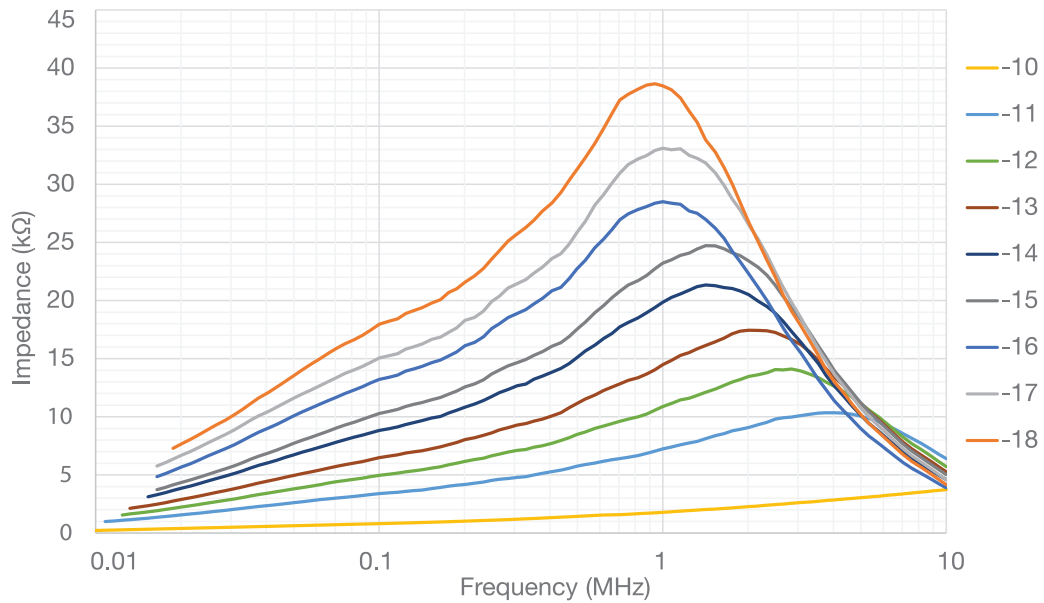


## Schematics WCM509 Large Size: #19-27



## Graphs WCM509 Large Size: #19-27

WCM509: Impedance Sweeps Graph  
Medium Chokes



**Dimensions:**

Inches  
mm

**Note:**

Please specify vertical or horizontal mount with your order.