

WCM201 Series

RF Inductors

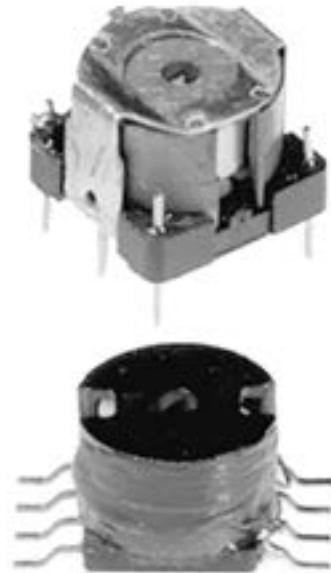
Product Description

West Coast Magnetics' WCM201 series tuneable inductors are designed for use in resonant circuits with application frequencies of 1 MHz and above. These inductors feature exceptional accuracy and stability as well as excellent shielding characteristics. Surface mount and through hole pin configurations are available.

Features and Benefits

The WCM201 series tuneable inductors can also be supplied with a tap to meet your requirements – West Coast Magnetics can supply the inductors tuned to the precise inductance required by your application.

Note: measurements made on HP 4342 Q meter.
Q minimum measured at nominal inductance value.



Engineering Data

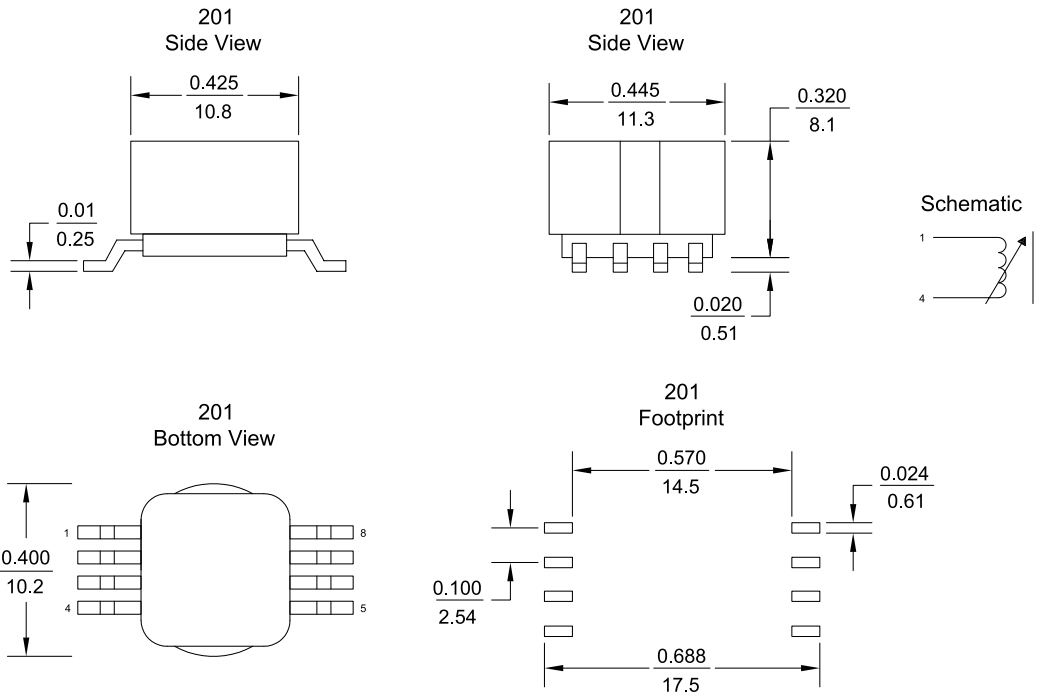
Product Code	Minimum Inductance (μH)	Maximum Inductance (μH)	Nominal Inductance (μH)	Q min	Test Frequency (MHz)
WCM201-01	0.90	1.08	0.99	117	10.0
WCM201-02	1.25	1.50	1.38	115	10.0
WCM201-03	1.60	1.92	1.76	113	10.0
WCM201-04	2.07	2.49	2.28	146	5.5
WCM201-05	2.50	2.95	2.75	144	5.5
WCM201-06	3.02	3.62	3.32	137	5.5
WCM201-07	3.60	4.32	3.96	128	5.5
WCM201-08	4.23	5.07	4.65	126	5.5
WCM201-09	4.91	5.94	5.40	119	5.5
WCM201-10	5.64	6.76	6.20	115	5.5



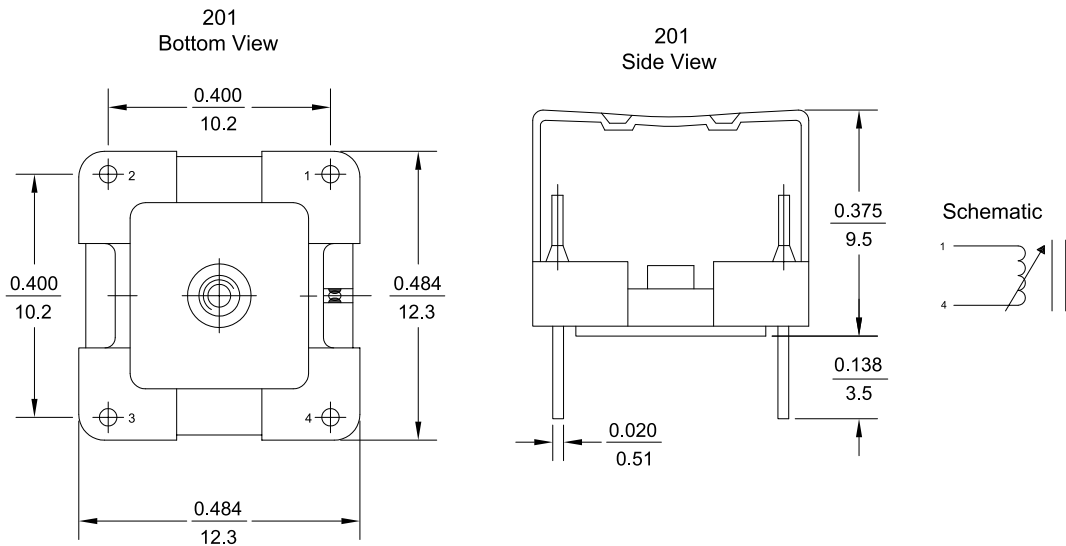
Engineering Data Conitnued

Product Code	Minimum Inductance (μH)	Maximim Inductance (μH)	Nominal Inductance (μH)	Q min	Test Frequency (MHz)
WCM201-11	6.41	7.67	7.04	113	5.5
WCM201-12	7.23	8.67	7.95	106	5.5
WCM201-13	8.11	9.71	8.91	104	5.5
WCM201-14	9.04	10.82	9.93	97	5.5
WCM201-15	10.01	11.99	11.00	94	5.5
WCM201-16	11.04	13.22	12.13	146	3.2
WCM201-17	12.11	14.51	13.31	142	3.2
WCM201-18	13.24	15.86	14.55	140	3.2
WCM201-19	14.41	17.27	15.84	135	3.2
WCM201-20	15.64	18.74	17.19	131	3.2
WCM201-21	18.25	21.85	20.05	128	3.2
WCM201-22	21.05	25.21	23.13	122	3.2
WCM201-23	24.05	28.81	26.43	117	3.2
WCM201-24	27.25	32.65	29.95	108	3.2
WCM201-25	30.66	36.72	33.69	101	3.2
WCM201-26	34.26	41.04	37.65	155	2.0
WCM201-27	38.07	45.56	41.83	149	2.0
WCM201-28	42.07	50.39	46.23	142	2.0
WCM201-29	46.27	55.43	50.85	140	2.0
WCM201-30	50.68	60.70	55.69	135	2.0

Surface Mount Option



Through Hole Option



Dimensions:	Note:
Inches mm	All materials of construction minimum Class B 130° C rated.