

802 series

50Hz/60Hz/500Hz transformers

PRODUCT DESCRIPTION

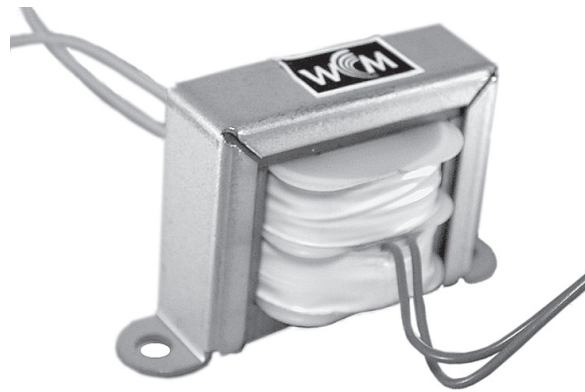
West Coast Magnetics' 60 Hz transformers are designed for use in low frequency power applications. They feature high efficiency resulting in a compact size. These 60 Hz transformers also incorporate safety features which make them ideal for international safety applications. Split bobbin construction results in very low capacitance.

FEATURES & BENEFITS

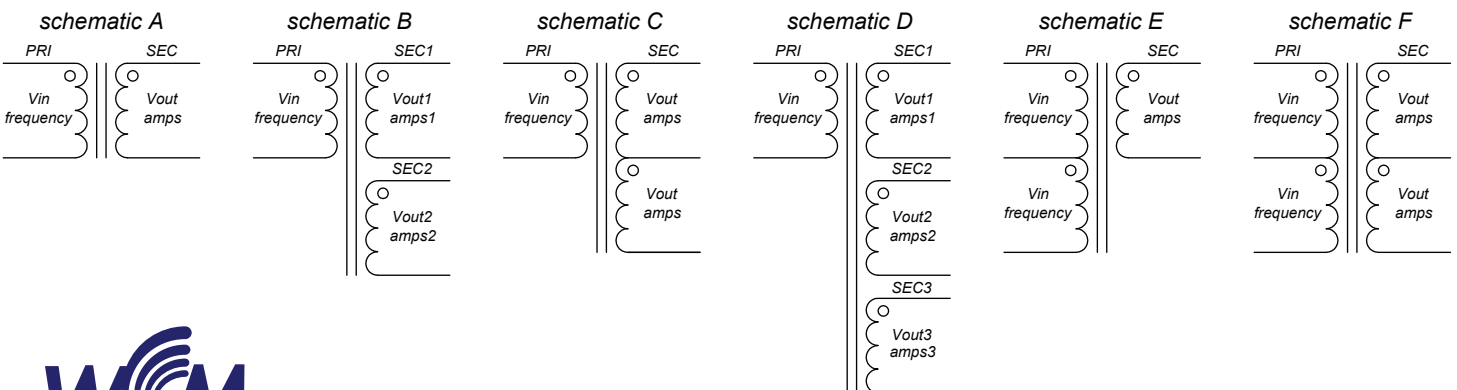
High efficiency power to 60 Watts – 2500 Vrms hypot – (3500 Vrms on request) – Low capacitance

Product Code	VA Rating*	Weight (g)
802-1	3.2	96
802-2	4.3	125
802-3	6.3	165
802-4	8.0	206
802-5	11.0	272
802-6	14.0	326
802-7	23.0	468
802-8	31.0	624
802-9	44.0	741
802-10	57.0	925

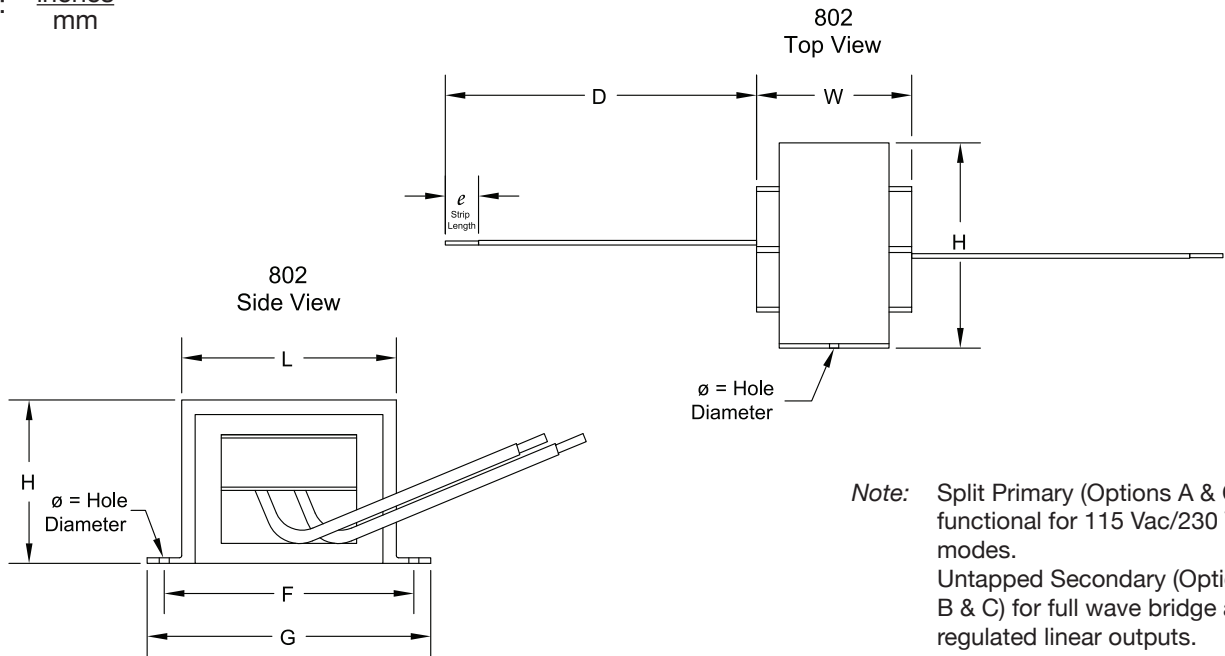
*Note: VA rating based on 60 Hz operation



This custom power transformer will be designed precisely to your requirements. Choose a schematic below and click here to contact us with your specifications.



Dimensions: $\frac{\text{inches}}{\text{mm}}$



Note: Split Primary (Options A & C) functional for 115 Vac/230 Vac modes.
Untapped Secondary (Options B & C) for full wave bridge and regulated linear outputs.

Product Code	L	W	H	F	G	\varnothing	D	e	Lead Wire
802-1	$\frac{1.46}{37.1}$	$\frac{1.07}{27.2}$	$\frac{1.21}{30.7}$	$\frac{1.75}{44.5}$	$\frac{2.06}{52.4}$	$\frac{0.187}{4.7}$	4"	3/8	24 AWG
802-2	$\frac{1.46}{37.1}$	$\frac{1.20}{30.5}$	$\frac{1.21}{30.7}$	$\frac{1.75}{44.5}$	$\frac{2.06}{52.4}$	$\frac{0.187}{0.7}$	4"	3/8	24 AWG
802-3	$\frac{1.72}{43.7}$	$\frac{1.20}{30.5}$	$\frac{1.39}{35.3}$	$\frac{2.0}{50.8}$	$\frac{2.38}{60.5}$	$\frac{0.187}{4.7}$	5"	3/8	24 AWG
802-4	$\frac{1.72}{43.7}$	$\frac{1.40}{37.6}$	$\frac{1.39}{35.3}$	$\frac{2.0}{50.8}$	$\frac{2.38}{60.5}$	$\frac{0.187}{4.7}$	5"	3/8	24 AWG
802-5	$\frac{1.96}{49.8}$	$\frac{1.31}{33.3}$	$\frac{1.65}{41.9}$	$\frac{2.375}{60.3}$	$\frac{2.81}{71.5}$	$\frac{0.187}{4.7}$	5"	3/8	24 AWG
802-6	$\frac{1.96}{49.8}$	$\frac{1.45}{36.8}$	$\frac{1.65}{41.9}$	$\frac{2.375}{60.3}$	$\frac{2.81}{71.5}$	$\frac{0.187}{4.7}$	5"	3/8	24 AWG
802-7	$\frac{2.33}{59.2}$	$\frac{1.58}{40.1}$	$\frac{1.97}{50.0}$	$\frac{2.81}{71.5}$	$\frac{3.25}{82.6}$	$\frac{0.187}{4.7}$	6"	1/2	24 AWG
802-8	$\frac{2.33}{59.2}$	$\frac{1.86}{47.2}$	$\frac{1.97}{50.0}$	$\frac{2.81}{71.5}$	$\frac{3.25}{82.6}$	$\frac{0.187}{4.7}$	6"	1/2	24 AWG
802-9	$\frac{2.73}{69.3}$	$\frac{1.82}{46.2}$	$\frac{2.38}{60.5}$	$\frac{3.125}{79.4}$	$\frac{3.69}{93.7}$	$\frac{0.187}{4.7}$	6"	1/2	24 AWG
802-10	$\frac{2.73}{69.3}$	$\frac{2.21}{36.2}$	$\frac{2.38}{60.5}$	$\frac{3.125}{79.4}$	$\frac{3.69}{93.7}$	$\frac{0.187}{4.7}$	6"	1/2	24 AWG

Note: All materials of construction minimum Class B 130° C rated.